



Hampshire Ornithological Society

ca 2000 members
(including 80 under 22)

www.hos.org.uk



New Forest Winter Bird Survey

37 routes – October to March

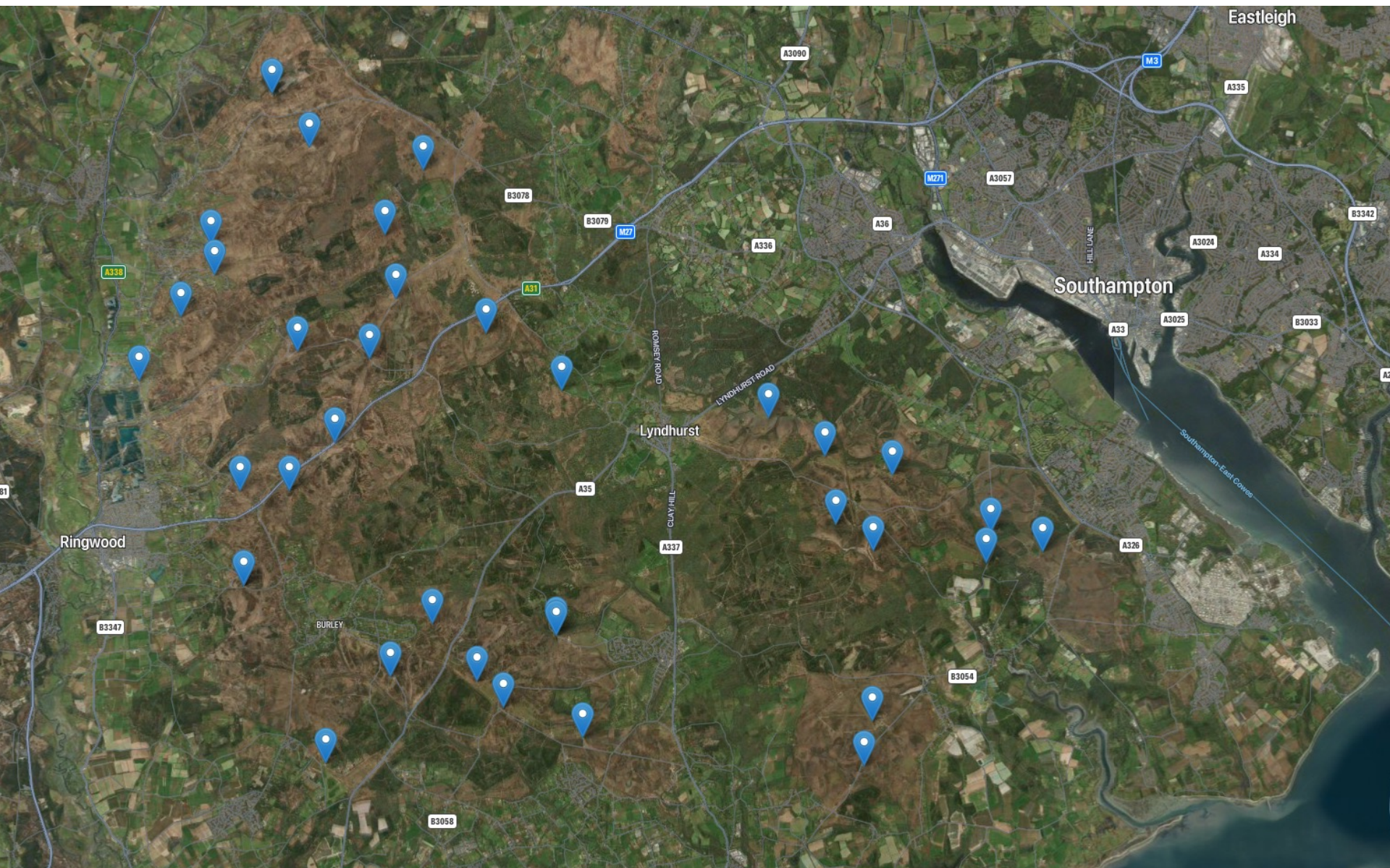
Monthly count on a circular walk

20 years of data now collected

Also note people, dogs, cyclists ... and more

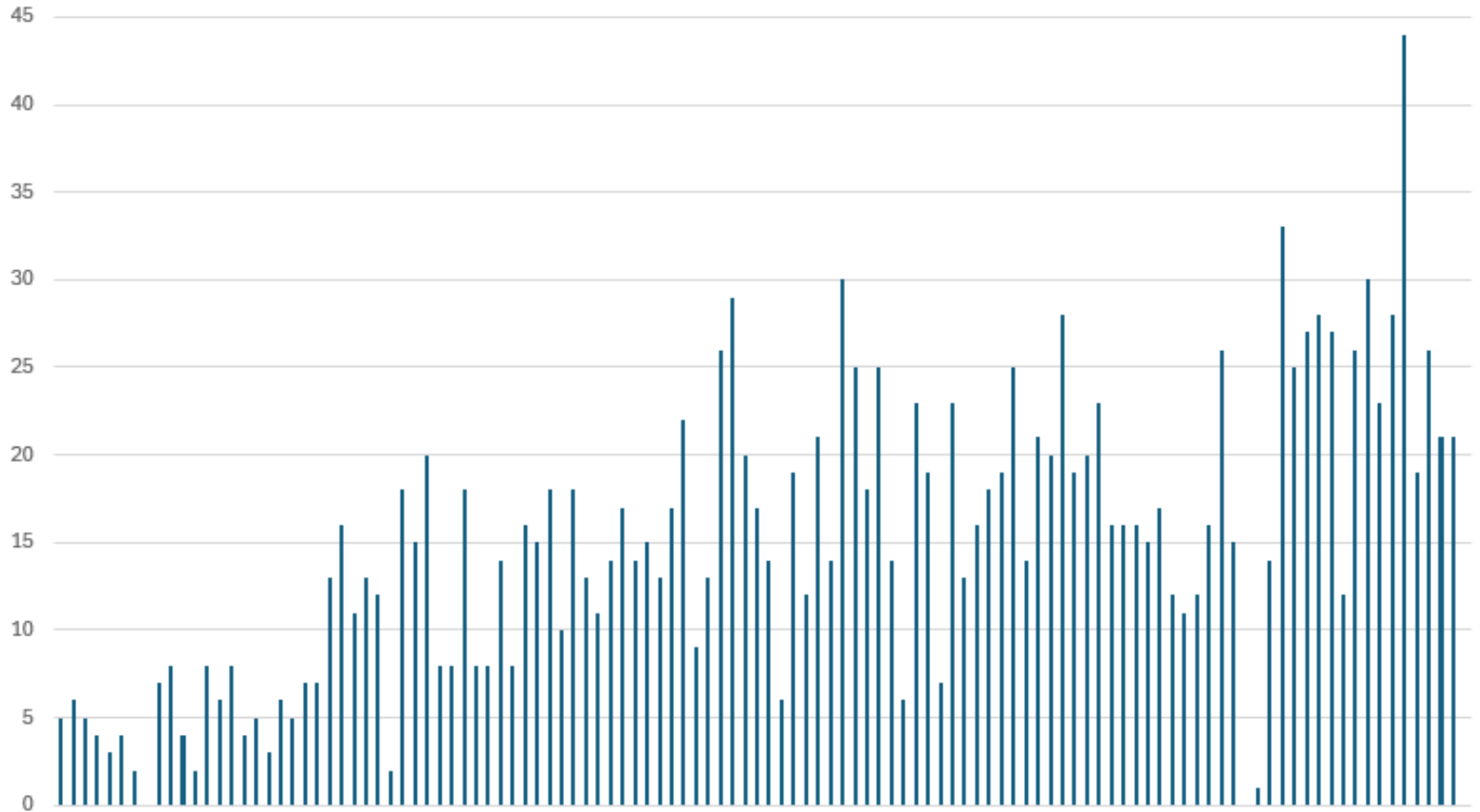
Potential for future analysis

New Forest Winter Bird Survey – routes





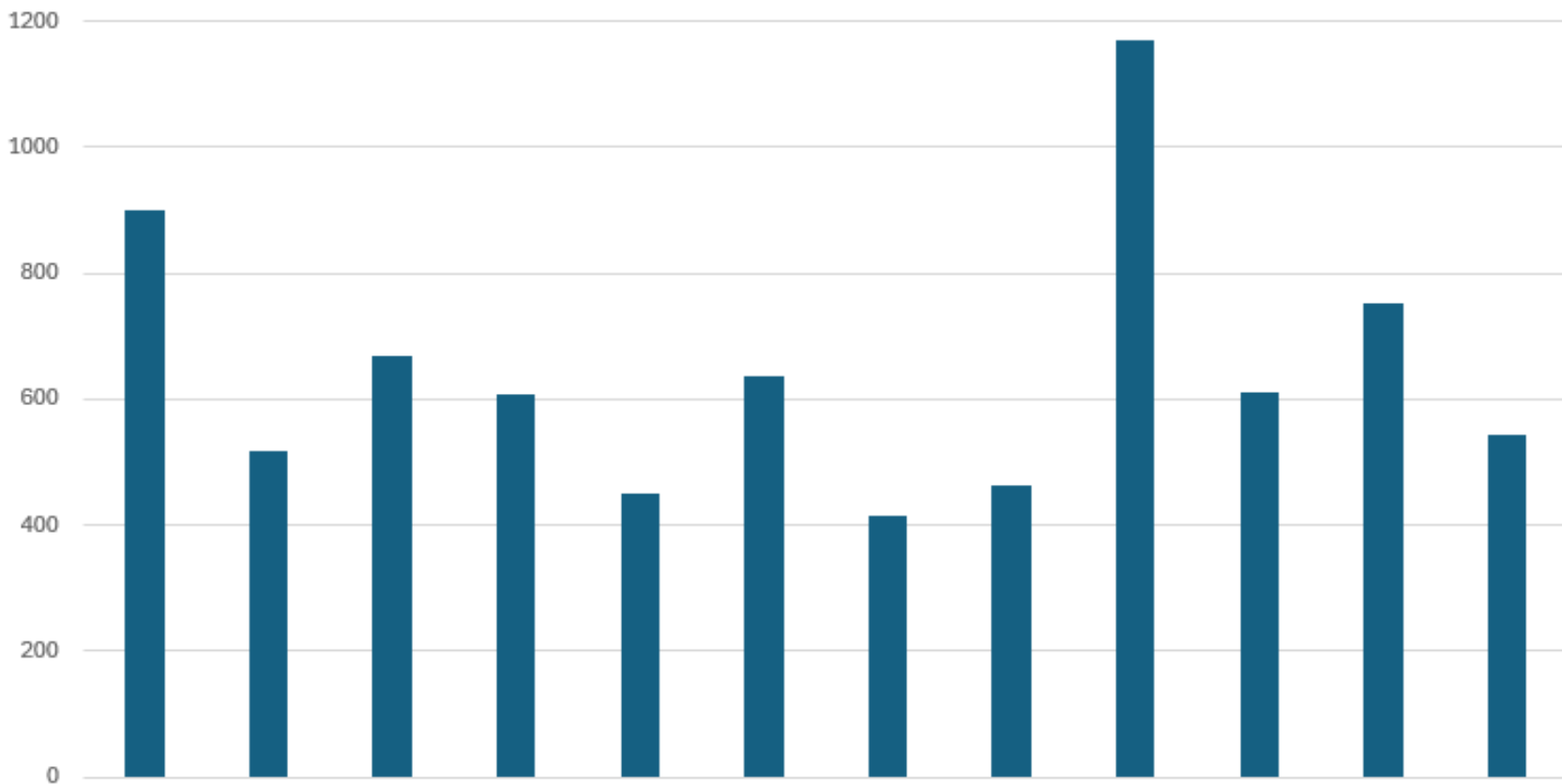
Raven across 37 sites 2002/03 – 2022/23





Walkers across 37 sites

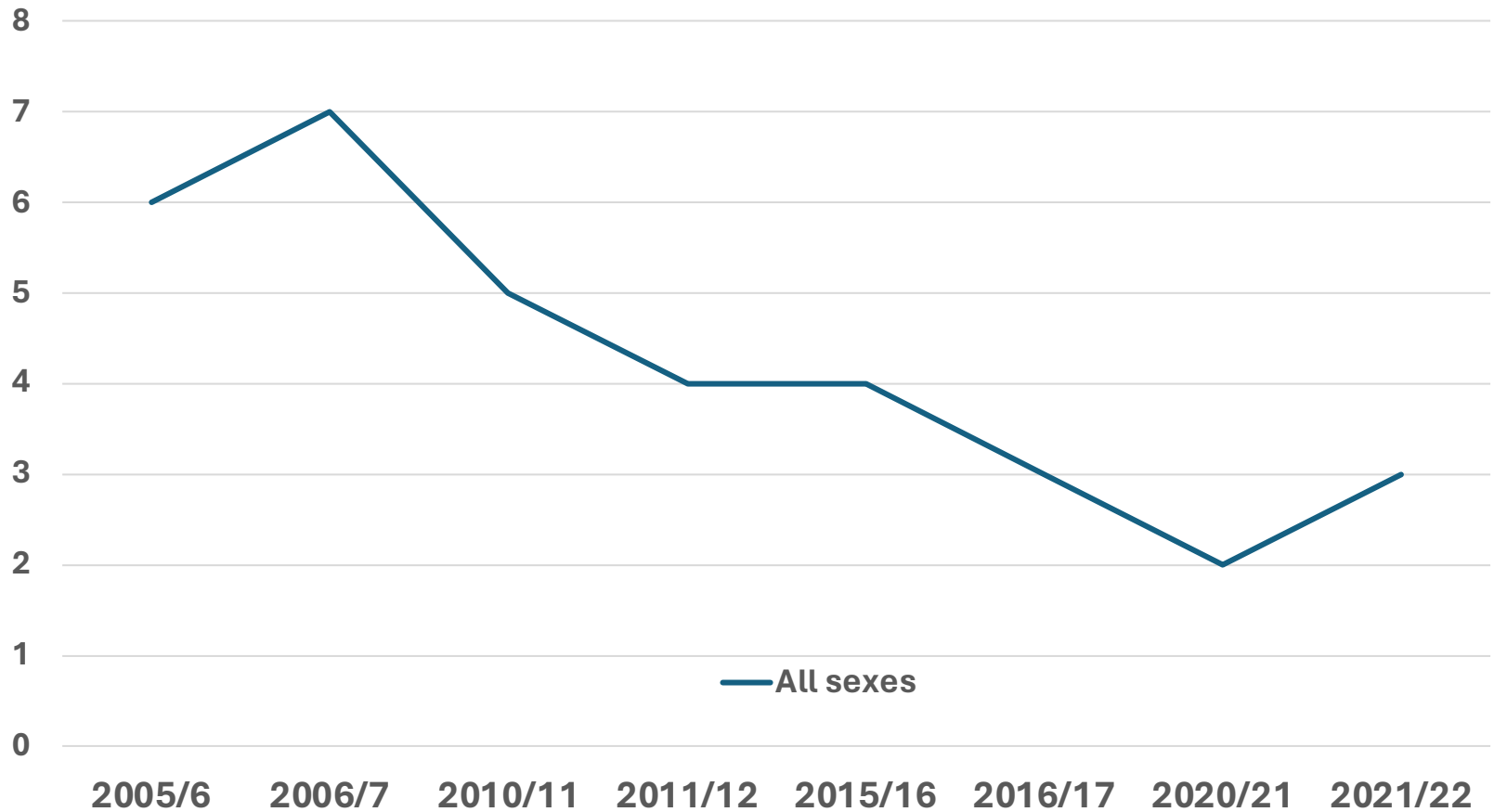
December only **2012-2023**





Hen Harrier

Maximum numbers per winter





Dartford Warbler Surveys

2014 – 268 territories

2018 – 143 territories

2023 – 571 territories





Woodlark Surveys

2014 – 134 territories

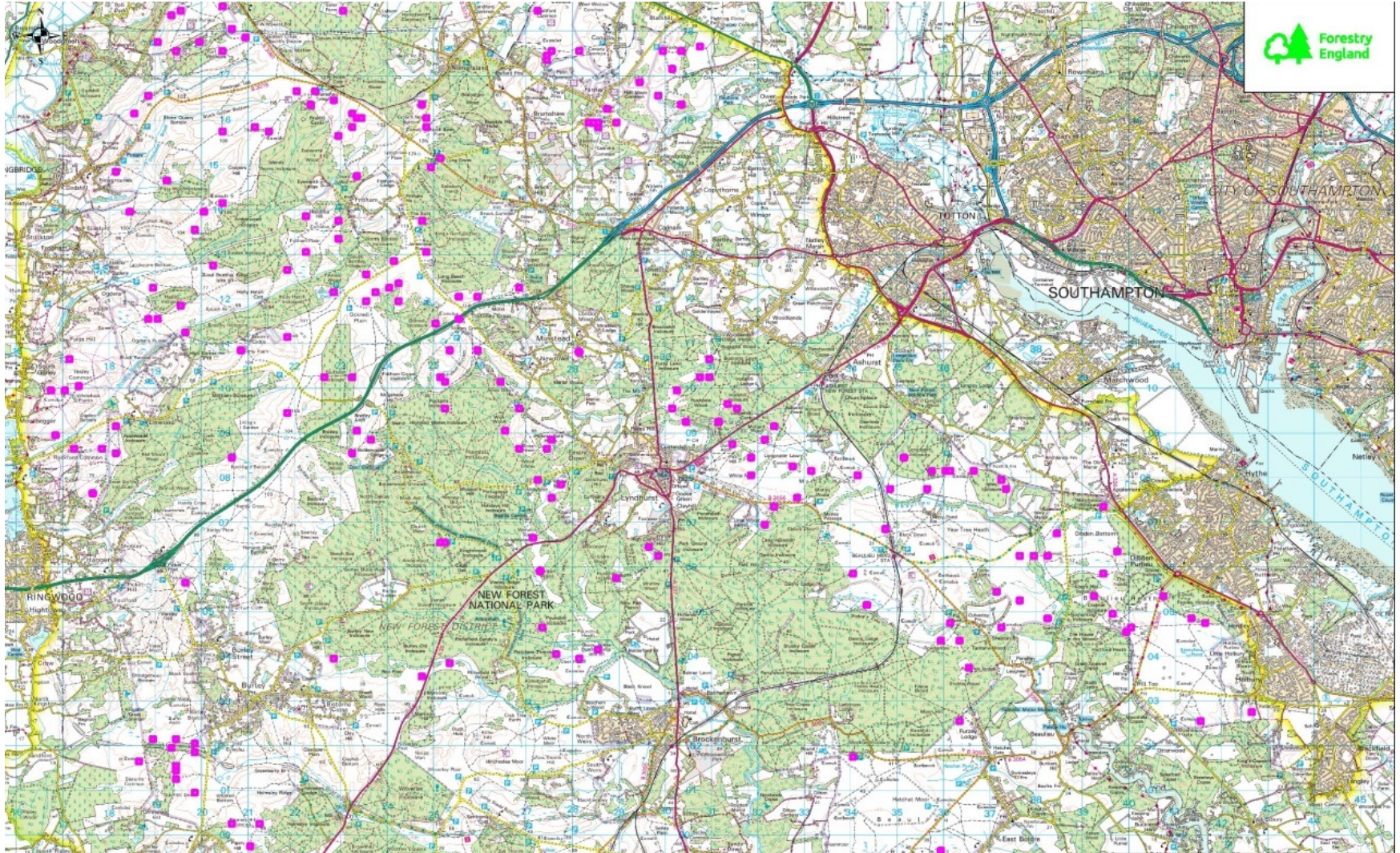
2019 – 169 territories

2024 – ?



Woodlark

Territory distribution in 2019



Title: 2019 Woodlark Survey Points
Date: 17 September 2019
Author: Andy Page
Scale @ A3: 1:75,000

Keith Betton

07809 671468



**Hampshire
Ornithological
Society**

www.hos.org.uk