



**Hampshire &
Isle of Wight**
Wildlife Trust

The New Forest Non-Native Plants Project

**Presentation by Catherine Chatters
New Forest Non-Native Plants Officer**

New Forest Biodiversity Conference 7 February 2024



What are invasive non-native species?

‘non-native’ species are
introduced by
human activity

also known as ‘alien’ species

Introductions: Deliberate & Accidental



Photo: Clive Chatters

What are invasive non-native species?

“any non-native animal or plant that has the ability to spread causing damage to the environment, the economy, our health or the way we live”

(Source: page 6 of the GB Invasive Non-Native Species Strategy, Feb 2023)



**“10 – 15%
of non-native species
established in GB cause
significant adverse
impacts”**

(Source: page 7 of the GB Invasive Non-Native Species Strategy, Feb 2023)



Photo: Clive Chatters



Photo: Clive Chatters



Photo: Clive Chatters



Photo: Ashley Basil





Photo: Clive Chatters

Aims of The New Forest Non-Native Plants Project

- Survey
- Advice
- Control
- Research
- Awareness-raising



**Hampshire &
Isle of Wight**
Wildlife Trust

Working in partnership



Himalayan Balsam



Photo: Ashley Basil



Volunteers from Southampton University









**Hampshire &
Isle of Wight**
Wildlife Trust

Beaulieu River 2009



River	OS grid reference	Population size
Beaulieu River	SU 38490 04727	1
	SU 38413 04733	20
	SU 38413 04733	300+
	SU 38407 04759	15
	SU 38424 04792	3
	SU 38424 04792	25+
	SU 38433 04800	3
	SU 38434 04816	50+
	SU 38446 04837	150+
	SU 38458 04833	100+
	SU 38455 04847	50+
	SU 38473 04882	500+
	SU 38494 05402	20+
	SU 38462 05423	1000+
	SU 38462 05444	1
	SU 38345 05447	5
	SU 38322 05463	75+
	SU 38321 05500	300+
	SU 38319 05501	20
	SU 38304 05556	1
	SU 38283 05576	100+
	SU 38277 05587	2500+
	SU 38263 05607	200+
	SU 38238 05631	1000+
	SU 38221 05 647	3000+
	SU 38210 05656	200+
	SU 38229 05666	3000+
	SU 38130 05838	1200+
	SU 38121 05968	4
	SU 38044 06281	50+
	SU 38070 06317	400+



Photo: John Pemberton









Cotoneaster

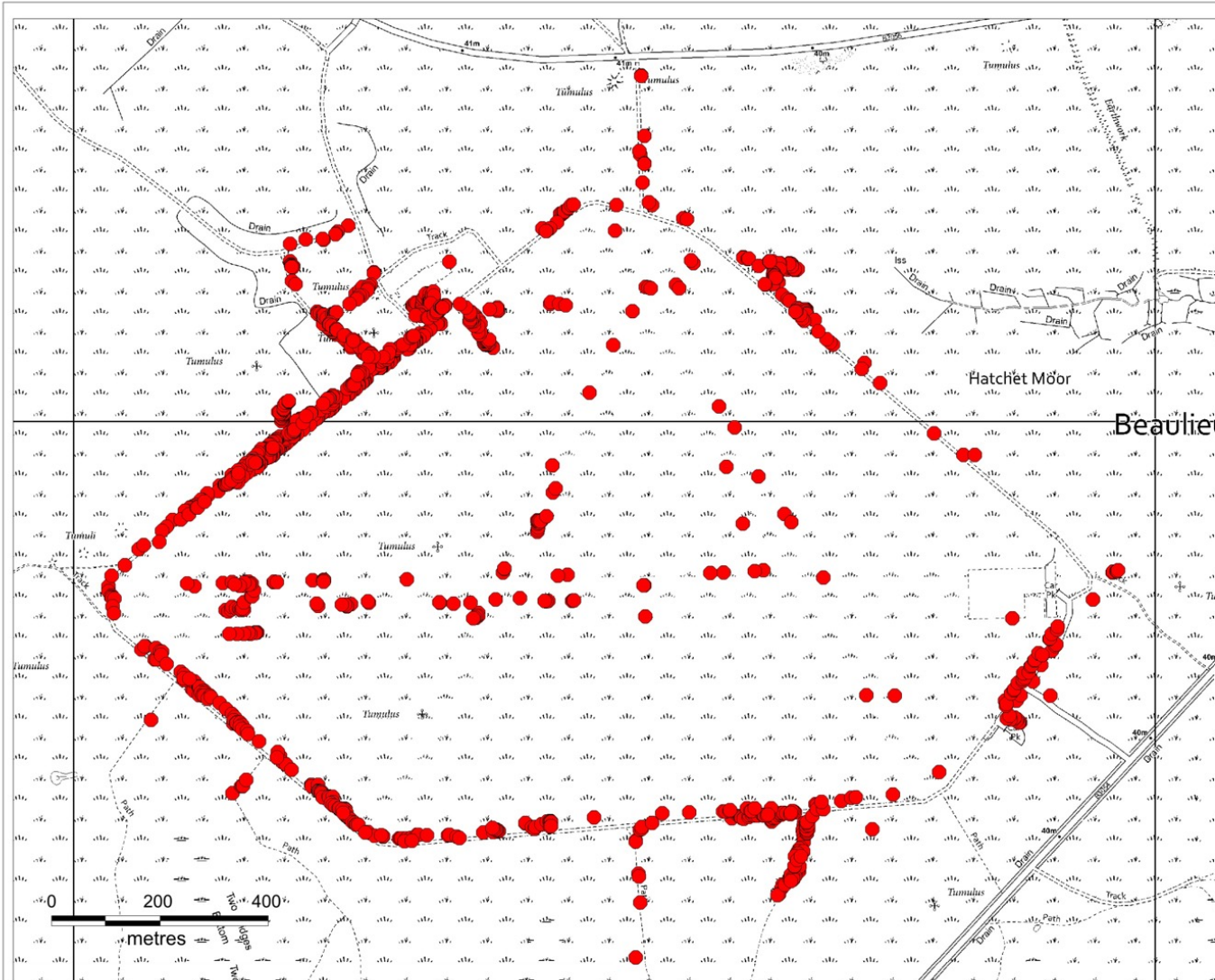






**Hampshire &
Isle of Wight
Wildlife Trust**

Cotoneaster recorded on Beaulieu Heath by Project Officer and volunteers during 2022



Location of Cotoneaster plants in vicinity of former WWII Airfield at Beaulieu Heath

Recorded on 11, 12 and 14 October
2022 and 2 and 11 November 2022
by Catherine Chatters, New Forest
Non-Native Plants Officer, with help
from volunteers David Smart and
Cynthia Swann.

Ordnance Survey Basemap (1:10,000)

Scale 1:10,000 (A4)



● Cotoneaster location

Map reproduced by Hampshire and Isle of Wight Wildlife Trust. Crown Copyright 2020 OS 100015632.

Unauthorised reproduction infringes Copyright and may lead to prosecution or civil proceedings. British Crown and MarineFind Ltd. All rights reserved.

BAP Priority habitat, notable species and SINC data supplied by the Hampshire Biodiversity Information Centre on behalf of the HBIC Partnership. Aerial photography courtesy of GetMapping plc.

Produced by Hampshire and Isle of Wight Wildlife Trust on 14 November 2022 by Agatha Thompson.

Hampshire and Isle of Wight Wildlife Trust
Beechcroft House, Vicarage Lane
Curridge, Hampshire
SO32 2DP





Gaultheria



Surveying Gaultheria near Rhinefield

25 November 2018



16 November 2021



Surveying Gaultheria

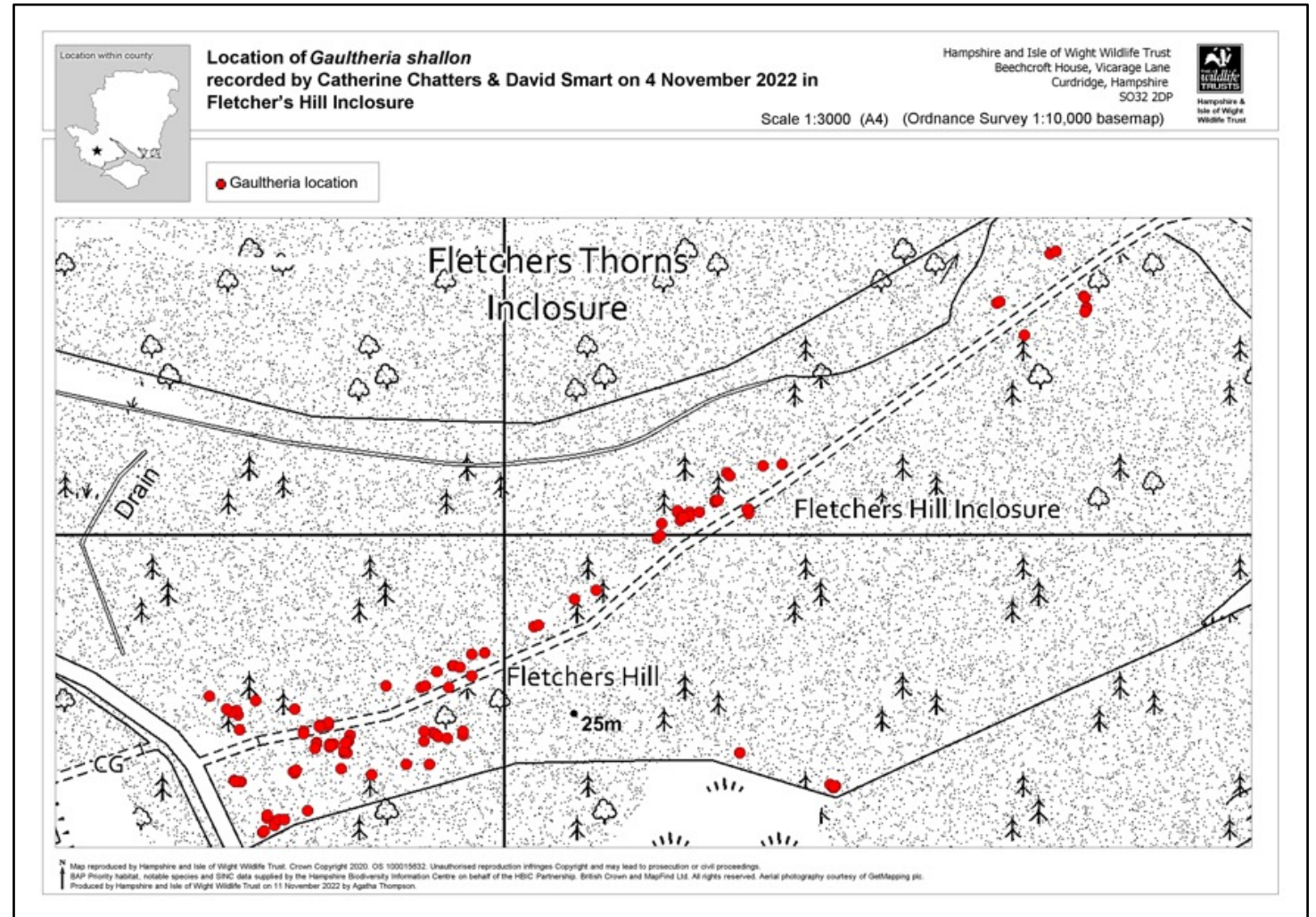




Photo: GBNNS

Parrot's Feather



Pillwort
Pilularia globulifera

Parrot's Feather
Myriophyllum
aquaticum

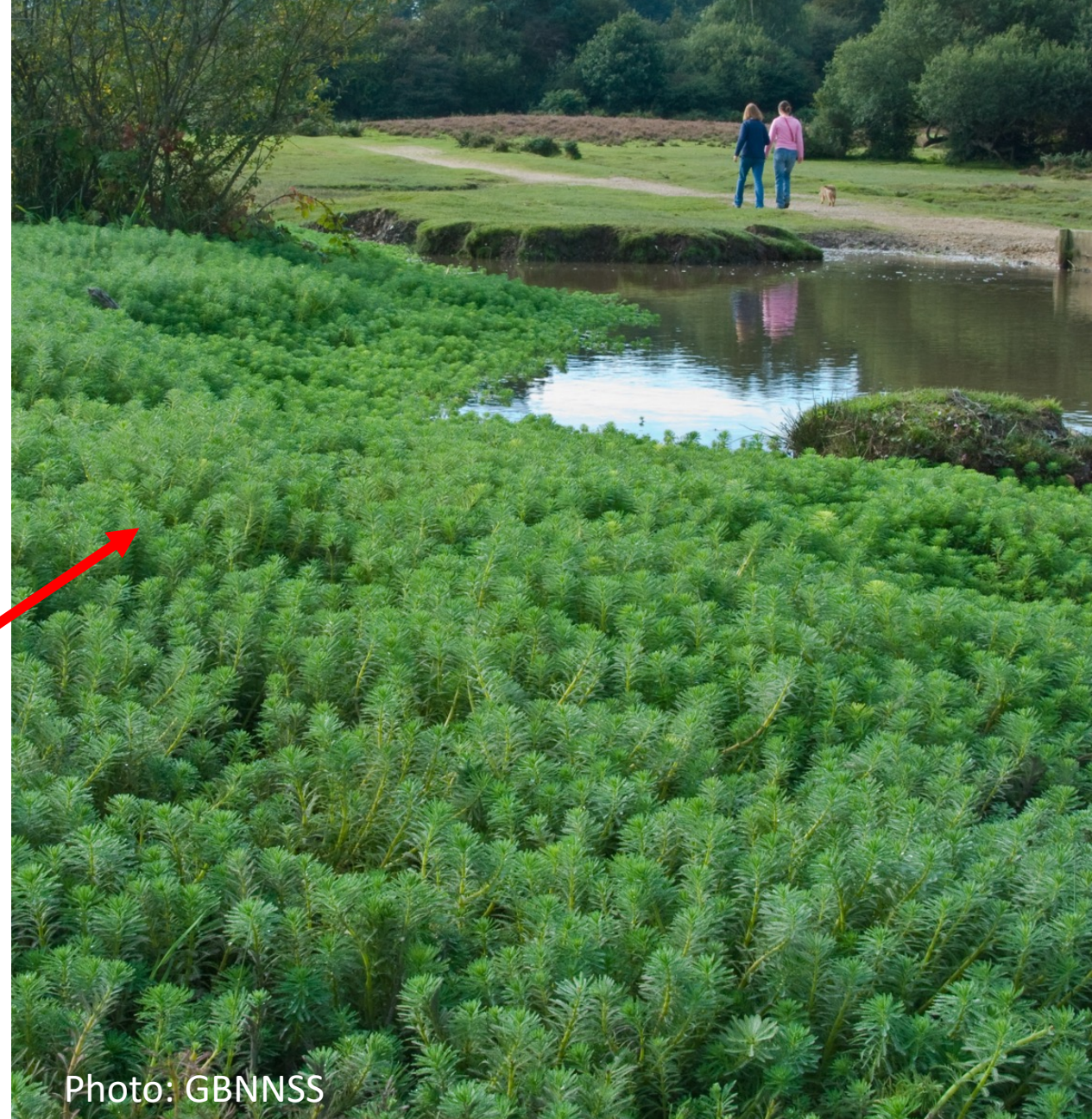


Photo: GBNSS



**Parrot's Feather
surveys by
volunteers
Sam Hempenstall
and Ben Graff
2012**



Parrot's Feather control by contractors



Purple Pitcher Plant



Purple Pitcher Plant flowers and seeds





Photo on left: *Nicrophorus vespilloides* by Paul Brock







Now mainly young,
immature plants
and few seedlings





Thank You



**Hampshire &
Isle of Wight**
Wildlife Trust

Thank You



**Environment
Agency**



Lymington &
Pennington
Town Council

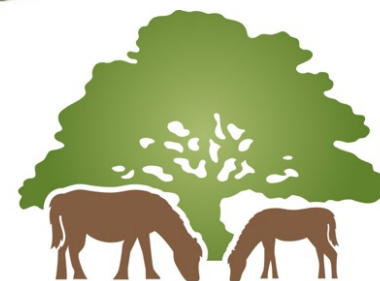


**Forestry
England**



**Water Environment
Improvement Fund**

Test & Itchen Catchment Partnership



**NEW FOREST
NATIONAL PARK**



**Environment
Agency**