

# Environment Agency Monitoring of Water Quality in the New Forest



Analysis & Reporting Team Leader  
Shirley Medgett

# Monitoring WQ - Physiochemical elements

pH

Ammonia

Nitrate

Phosphate

Dissolved oxygen

Temperature

Suspended solids



# EA Specific Chemical Monitoring

- PAHs, drugs including caffeine, mood stabilizing drugs, insect repellent, solvents/solvent stabilizers, plastic additives, agricides, precursor to nylon 6-



# Ecological elements



Sensitive to organic enrichment, pollution by toxic chemicals, acidification, abstraction



Primarily sensitive to abstraction of water and morphological alterations



Sensitive to nutrient enrichment and morphological alterations

# WQ investigations – 24 hour monitoring



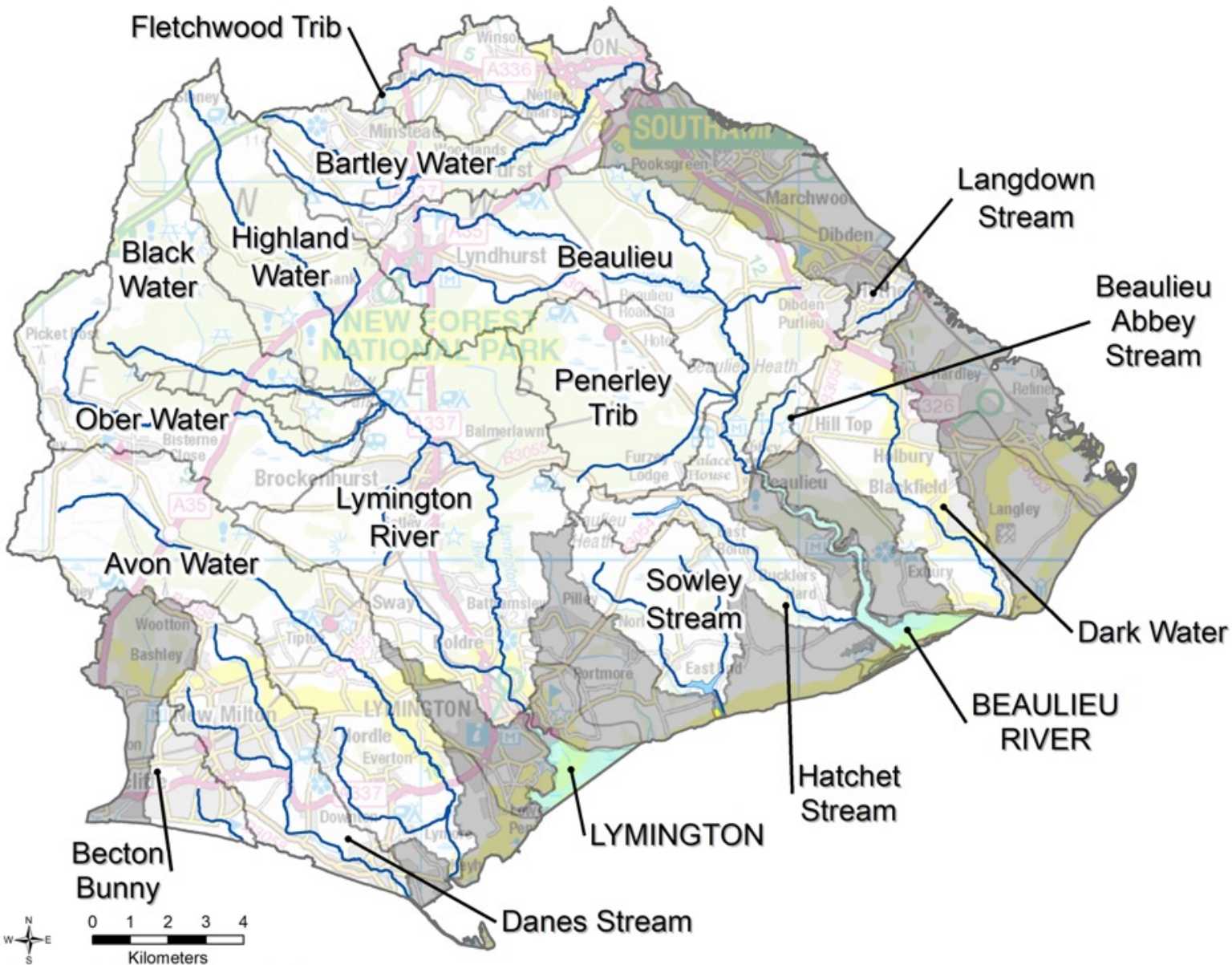
# Water Framework Directive (WFD) Catchments

## Legend

Cycle 2 WFD Catchments

Type

-  River
-  Transitional
-  Coastal Catchment



# Discharge Monitoring (Numeric Permits)

## Legend

### Water Company Waste Water Treatment Works

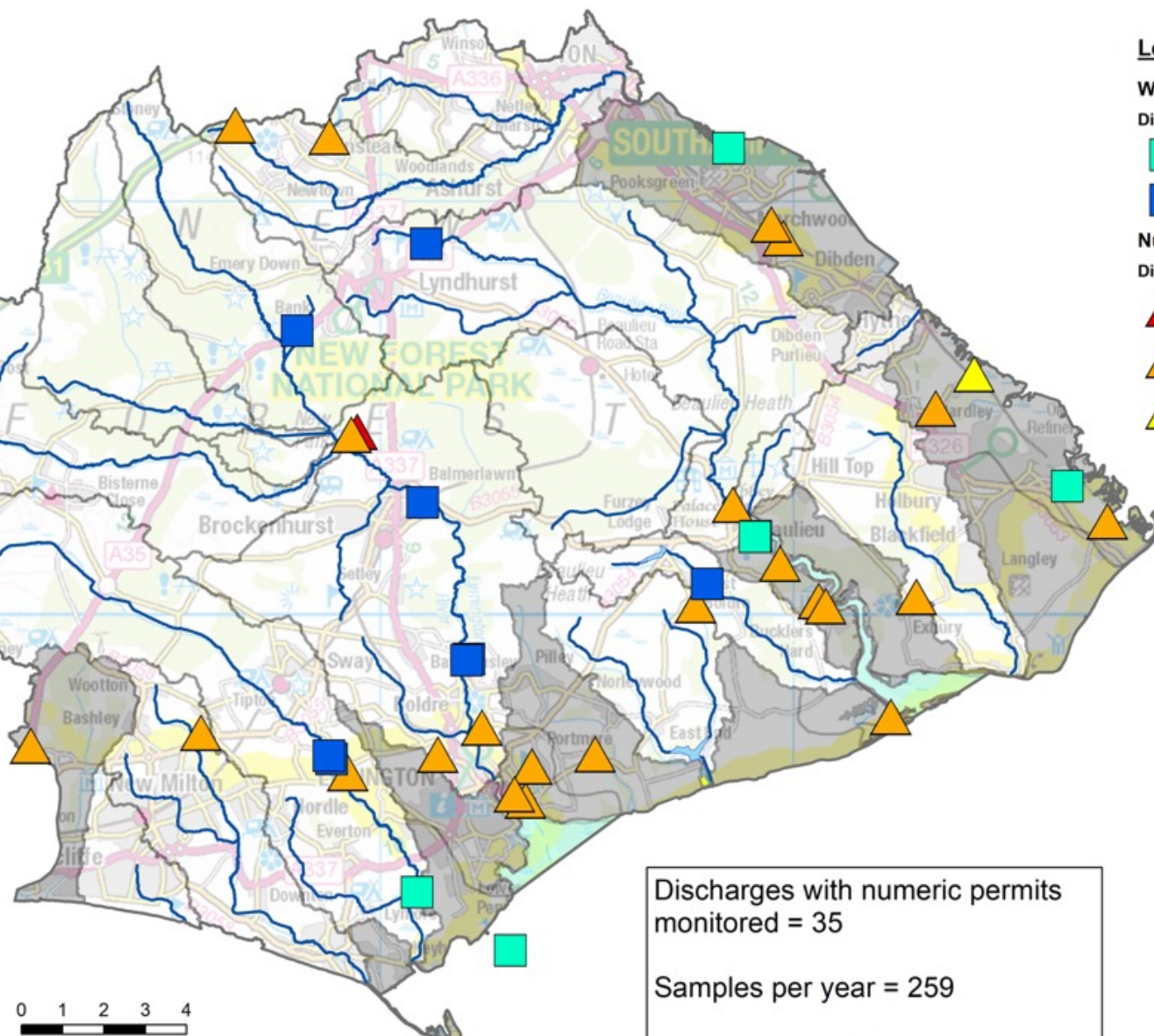
#### Discharge Environment

- Estuary/Tidal
- Freshwater

#### Numeric Permits

#### Discharge Activity

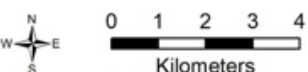
- ▲ Sewage and Trade combined
- ▲ Sewage - not water company
- ▲ Trade



Discharges with numeric permits monitored = 35

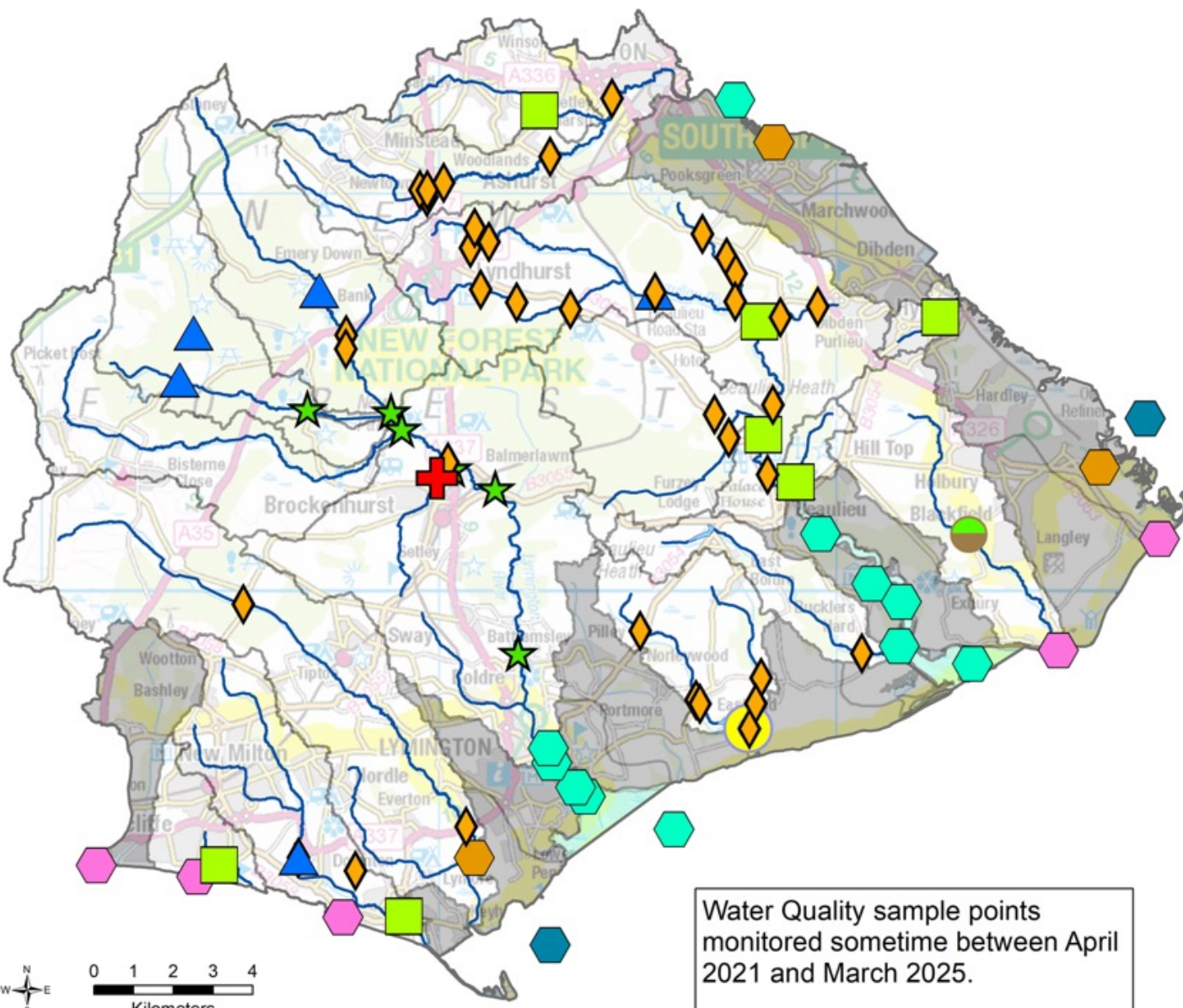
Samples per year = 259

Programmes subject to change.














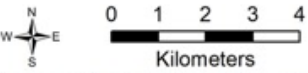
© Environment Agency copyright and/or database rights 2022.  
 © Ordnance Survey copyright and/or database rights 2022.  
 All rights reserved. Ordnance Survey Licence No 100024198.

# Water Quality Monitoring



### Legend

- Freshwater WQ**
-  Common Standards Monitoring
  -  Catchment Sensitive Farming
  -  Rivers Surveillance Network
  -  Phys-Chem
  -  Phys-Chem Lakes
  -  Phys-Chem Plus
  -  River Temperature Only
- Marine WQ**
-  Bathing Waters
  -  Nutrients (inc. Chlorophyll)
  -  Nutrients (inc. Chlorophyll, Phyto- and Zooplankton)
  -  Nutrients (Effluent)




Water Quality sample points monitored sometime between April 2021 and March 2025.

Programmes subject to change.





# Ecology & Fish Monitoring


## Legend

 Core Fisheries: Coarse Fish and Brown Trout

### Ecological Surveillance: Estuarine & Coasts Fish


 Marine fish (beam trawl netting)

 Marine fish (fyke netting)

 Marine fish (otter trawl)

 Marine fish (seine netting)

### Diatoms Only

 WFD and Weight of Evidence

### Diatoms and Invertebrates

 Catchment Sensitive Farming

 Natural Capital & Ecosystem Assess.: Small Streams

 WFD and Weight of Evidence

### Diatoms, Invertebrates and Plants

 Rivers Surveillance Network (RSN)

### Diatoms, Invertebrates & River Habitat Survey

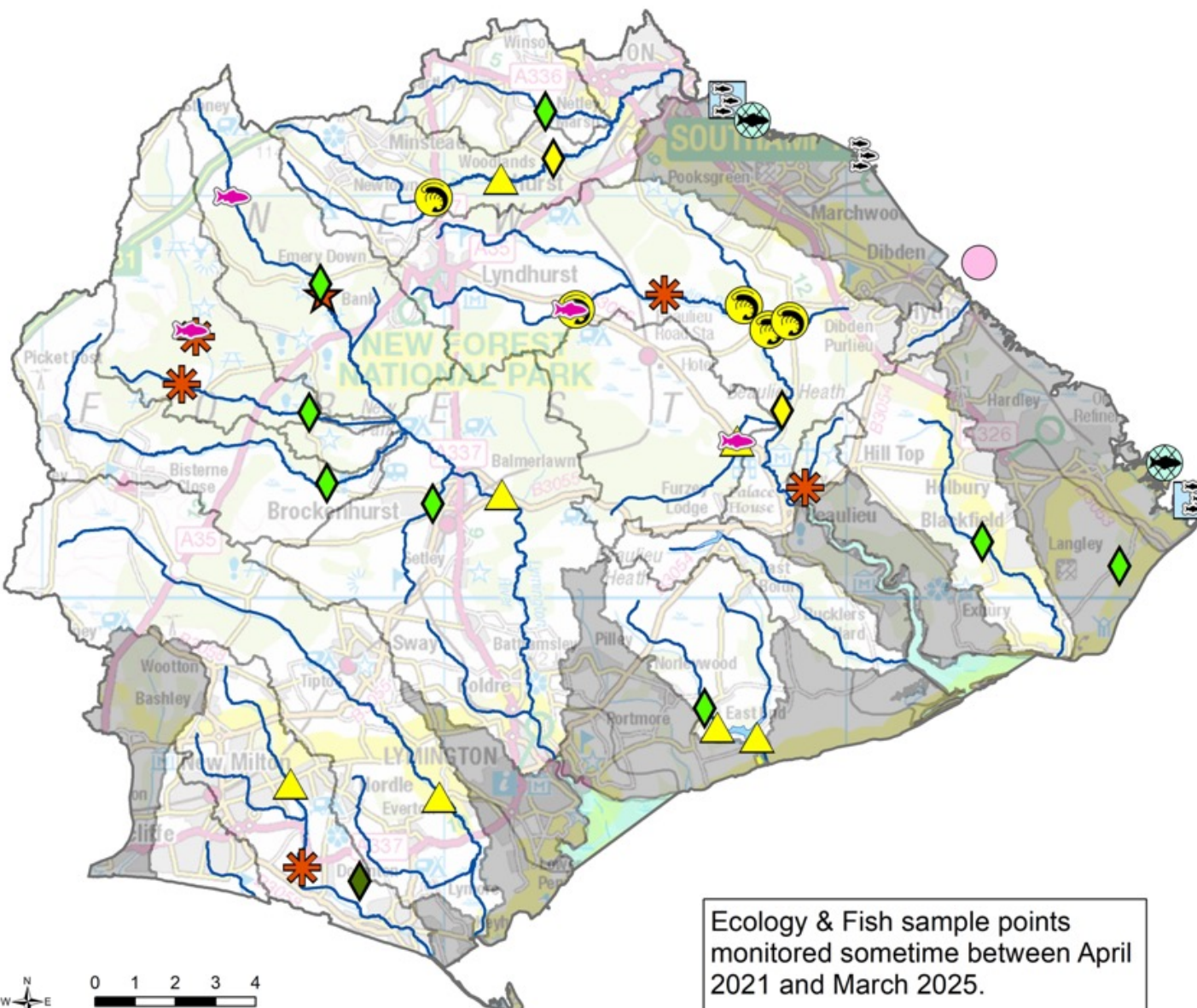
 National Drought Monitoring Network

### Diatoms, Invertebrates, Plants & RHS

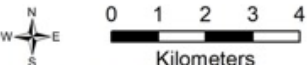
 Rivers Surveillance Network (RSN)

### Inverts Only

 WFD and Weight of Evidence



Ecology & Fish sample points monitored sometime between April 2021 and March 2025.  
Programmes subject to change.



© Environment Agency copyright and/or database rights 2022.  
© Ordnance Survey copyright and/or database rights 2022.  
All rights reserved. Ordnance Survey Licence No 100024198.

# How do we use the data?

- WFD Compliance with environmental standards
- Trend analysis
- Hot Spots
- Investigations in cause/source of problems
- Evidence on health of the environment (incl prosecutions)
- Influence environmental management
- Target resources effectively eg Water Company investments

# App gallery

Our Data is used in a wide range of Defra and third-party applications. Some of the applications below have been designed to meet a particular need, but they also provide examples of how the data can be used.

## [Asset data requirements library](#) >

The terminology and categories we use to classify and describe Environment Agency assets. We also document the attributes we use to describe the properties of each Asset Type and its Element Types.

[API](#)

## [Asset information](#) >

Records relating to assets for environmental activities, particularly flood defences. This includes some assets owned or managed by others, and information on planned maintenance activities for the assets.

[API](#)

## [Bathing waters](#) >

Our Bathing Waters app, SWIMFO allows you to look up details of a designated bathing water by name or location.

[API](#)

## [Bathing water signage](#) >

Create a sign for one or more bathing waters you control.

## [Bathing water widget](#) >

Show up-to-date bathing-water quality information from the Environment Agency

## [Catchment data explorer](#) >

Explore and download information about the water environment in your area and

# Supporting and using Citizen Science in the EA



Matt Owen-Farmer