



**Hampshire &
Isle of Wight**
Wildlife Trust

New Forest Nightjar Survey 2023

New Forest Biodiversity Conference

Carmen Perry, Senior Ecologist

Hampshire & Isle of Wight Wildlife Trust



Purpose of surveys

- Survey and assessment of nightjar in the New Forest – a requirement of the Higher Level Stewardship (HLS) agreement to monitor Special Protection Area (SPA) bird species. The SPA is designated due to its importance for:
 - Dartford warbler
 - Honey buzzard
 - Hobby
 - Hen harrier (over-wintering)
 - Nightjar
 - Woodlark
 - Wood warbler



Method

- 65 surveyors
- 154 transect routes
- 9pm - 11pm between end of May and mid July
- Walk the transect at a steady pace, stopping and listening for birds every few minutes
- All activity noted – churring, call, wing clapping, flying

✕
Nightjar Survey
📶
☰

▼ **Nightjar point location**
Use for nightjars in one location (not flying)

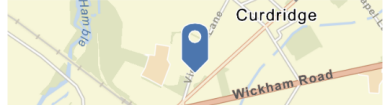
Individual code

Sex

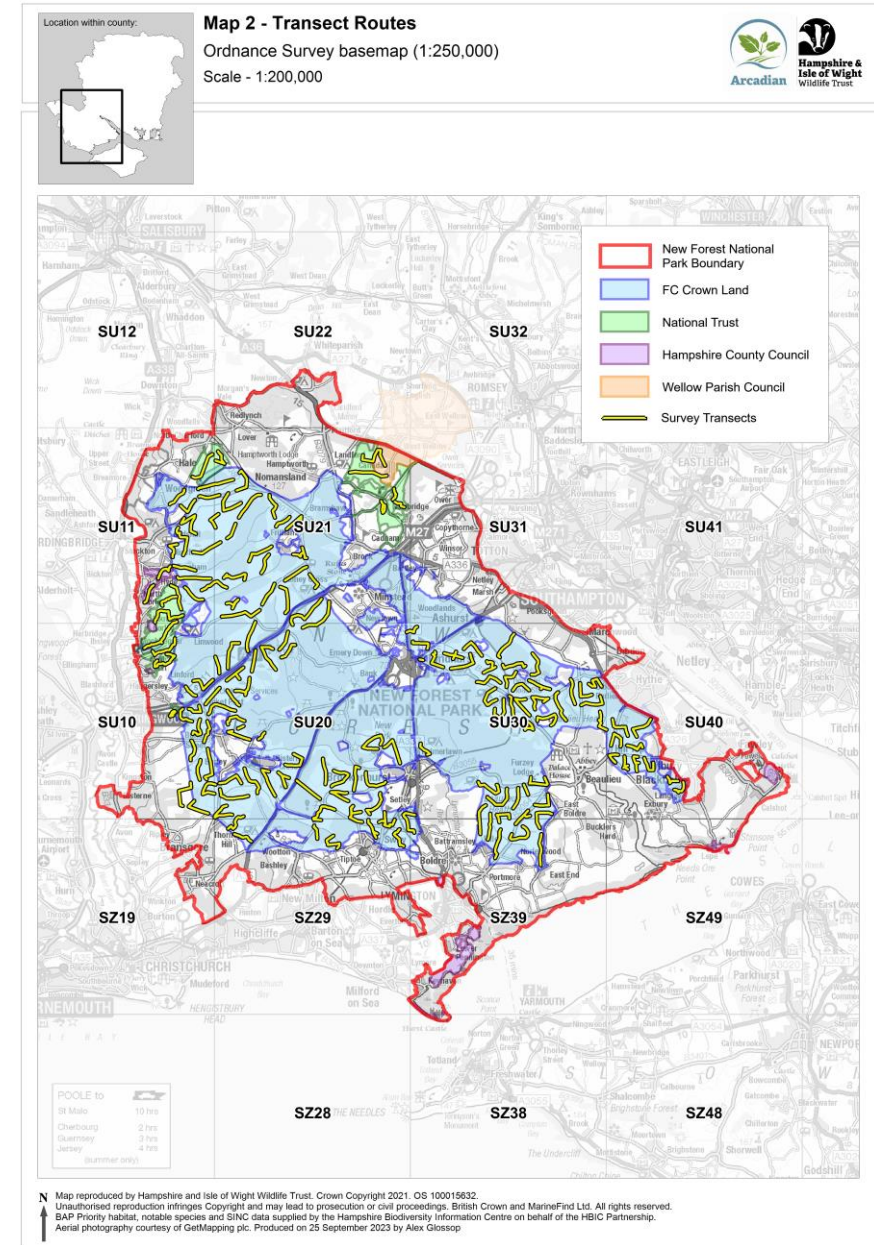
Activity

Count

Nightjar location
📍 50°55'N 1°15'W ± 5.0 m



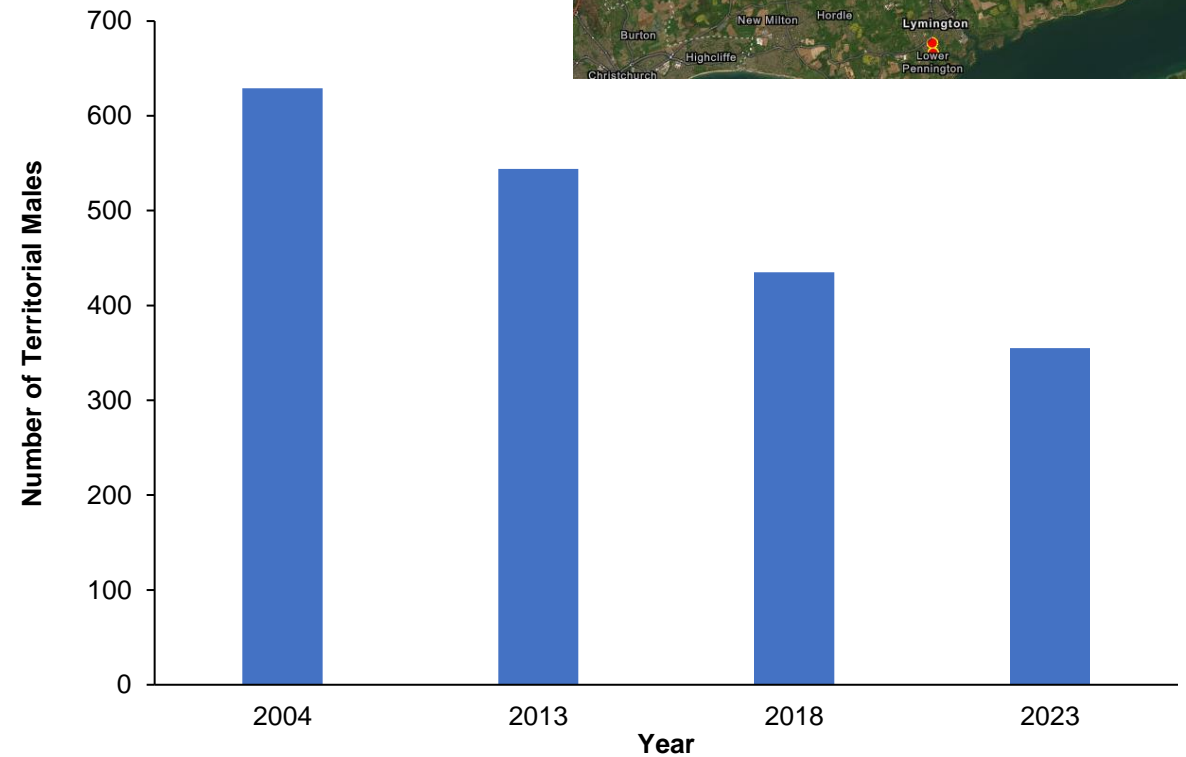
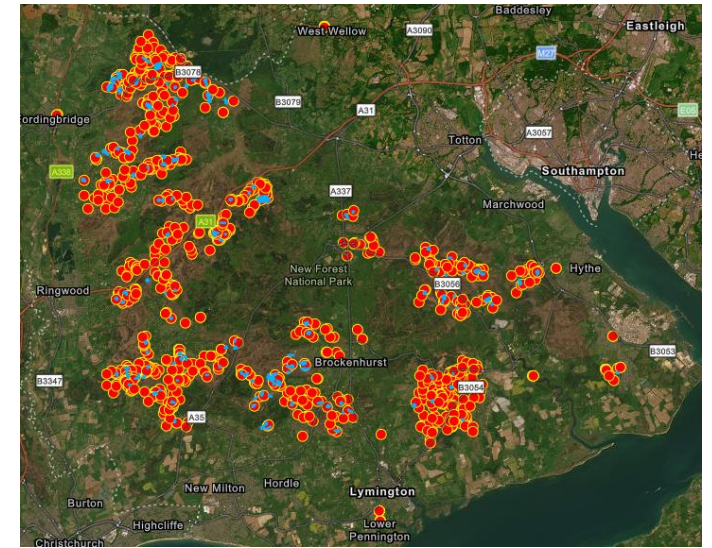
✓





Results

- 1,379 nightjar observations, of which 1033 were males
- 141 of 154 transects had nightjar
- 353 territorial males - 7.7% of the UK population
- Decline on the results of 2018 which recorded 435 territorial males
- Territorial males still exceeds the target of 300 breeding pairs for SPAs

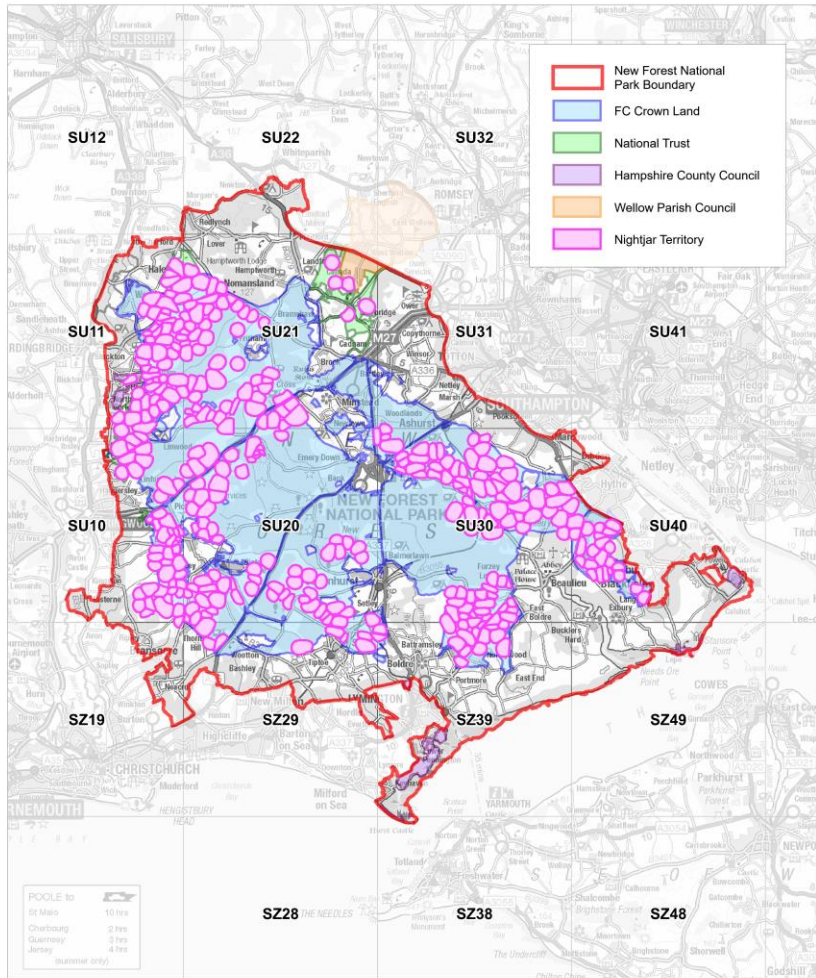




**Hampshire &
Isle of Wight
Wildlife Trust**



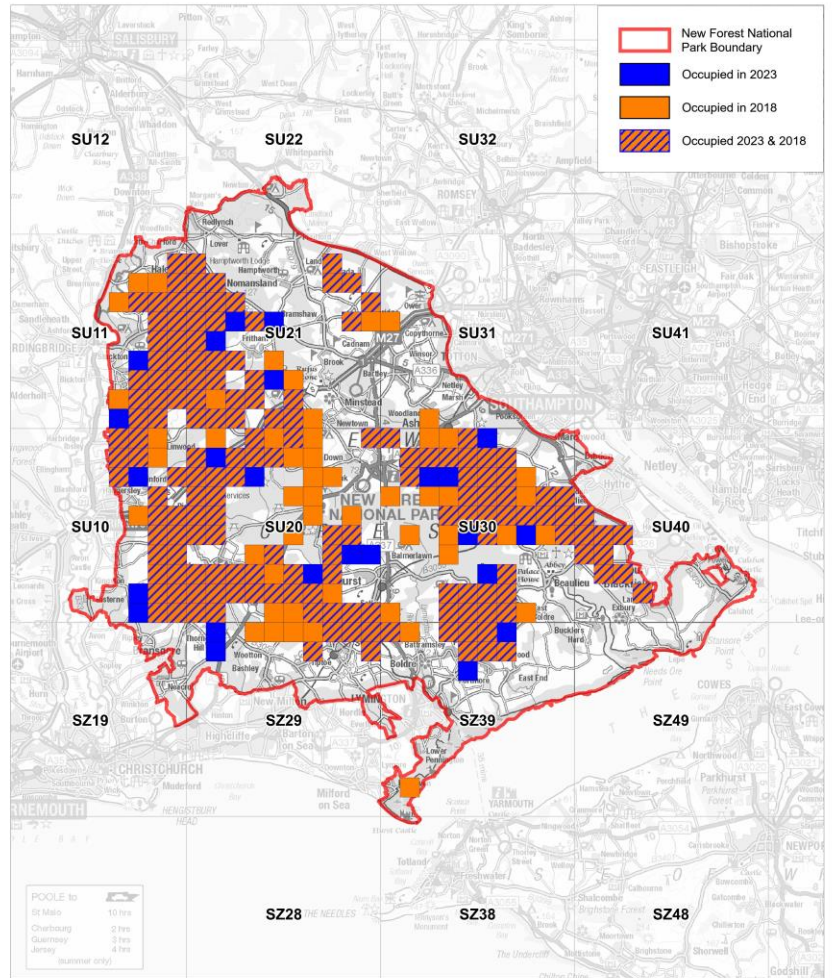
Map 9 - Nightjar Territories
Ordnance Survey basemap (1:250,000)
Scale - 1:200,000



Map reproduced by Hampshire and Isle of Wight Wildlife Trust. Crown Copyright 2021. OS 100015632.
Unauthorized reproduction infringes Copyright and may lead to prosecution or civil proceedings. British Crown and MarineFind Ltd. All rights reserved.
BAP Priority habitat, notable species and SINc data supplied by the Hampshire Biodiversity Information Centre on behalf of the HBiC Partnership.
Aerial photography courtesy of GetMapping plc. Produced on 19 October 2023 by Alex Glossop



Map 12 - 1km Square Occupancy (2023 & 2018)
Ordnance Survey basemap (1:250,000)
Scale - 1:200,000



Map reproduced by Hampshire and Isle of Wight Wildlife Trust. Crown Copyright 2021. OS 100015632.
Unauthorized reproduction infringes Copyright and may lead to prosecution or civil proceedings. British Crown and MarineFind Ltd. All rights reserved.
BAP Priority habitat, notable species and SINc data supplied by the Hampshire Biodiversity Information Centre on behalf of the HBiC Partnership.
Aerial photography courtesy of GetMapping plc. Produced on 25 October 2023 by Alex Glossop



**Hampshire &
Isle of Wight**
Wildlife Trust

